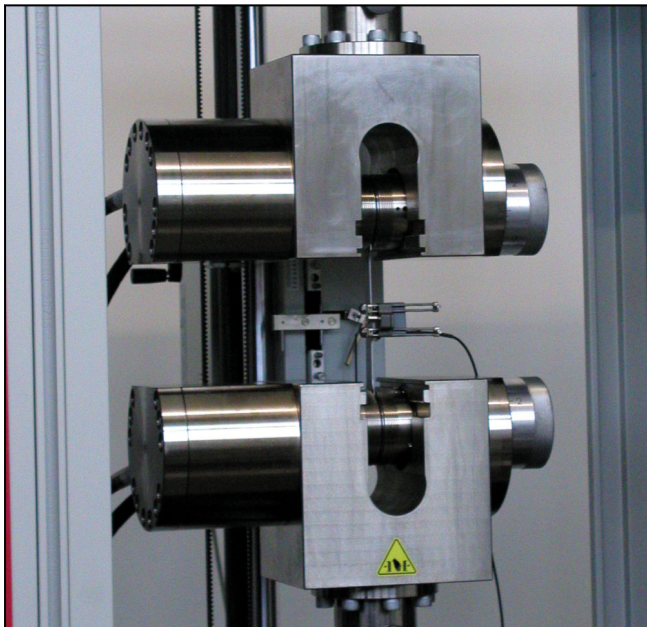


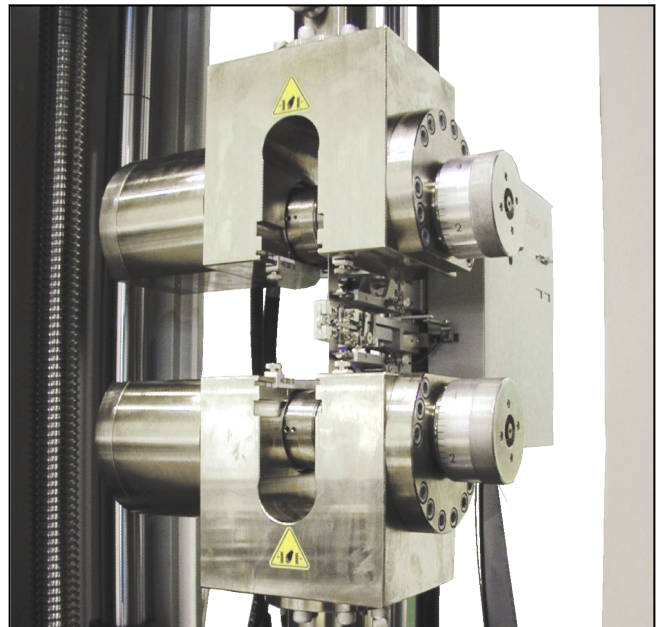
Product Information

Hydraulic grips Type 8802, Fmax 100 kN, and Type 8803, Fmax 250 kN

CTA: 39745 39755



Hydraulic grips Type 8802, Fmax 100 kN



Hydraulic grips Type 8803, Fmax 250 kN

Applications

- Specimen material
Metals, wood
- Specimen shape
Round and flat specimens
- Type of loading
Tensile, compression, alternating load

Function description

Hydraulic grips are single-sided closing and can be used for symmetrical and asymmetrical gripping.

The opposing jaw can be steplessly adjusted.

The closing and gripping pressure of the specimen grip can be set steplessly and reproducibly via a hydraulic power pack. The specimen is held securely and jaw breaks are prevented during the test.

Two horizontal T-slot pairs are found in the specimen grip. The larger slot is for insertion of the T-slotted system to accommodate smaller load cells and specimen grips. The smaller slot is for inserting/guiding additional accessories.

You can insert the specimen vertically and in the center using the specimen gripper. The slot of the specimen

grips is used as a guide. Using a specimen gripper helps minimize the risk of injury when inserting and removing specimens from the specimen grips. Such risks are the pinching of body parts between the jaws or the burning of body parts on hot specimens.

Advantages and features

- If the application changes, the jaws can be easily switched.
- Accurate test results along with a high cycle rate that is made possible by central insertion of the sample with the aid of an easily adjustable centering stop.
- The constant gripping force allows for repeatable test results.
- Short specimen can also be gripped due to the special design of the specimen grip.
- Reliable testing results are guaranteed with the optimal interaction between the hydraulic power pack, the electronics, and the testing software. The force-zero control prevents unwanted forces on the specimen during the gripping process.
- The prism jaws ensure flexibility. They can be rotated and have two-fold use:
 - Round and flat specimens
 - Round specimens with varying diameters

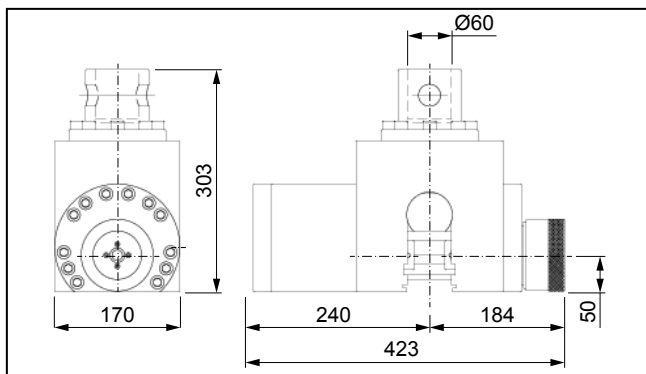
Product Information

Hydraulic grips Type 8802, F_{max} 100 kN, and Type 8803, F_{max} 250 kN

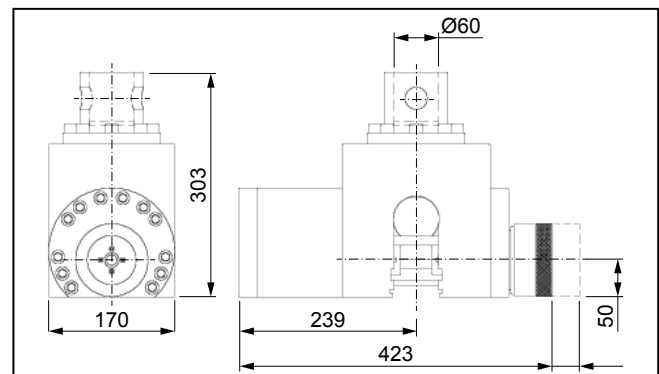
Technical data

Item No. Type	317178 8802	317180 8803	
Operating principle	Single-actuator	Single-actuator	
Adjustment of opposing jaw	Stepless	Stepless	
Test load F _{max}	100	250	kN
Pressure, min.	12	12	bar
Pressure, max.	300	480	bar
Closing force at max. pressure	255	410	kN
Dimensions			
Height	303	303	mm
Width	423	423	mm
Depth	170	170	mm
Width with screw unit, open all the way	461	423 (461)	mm
Gripping travel	35	70	mm
Gripping of the specimen	The specimen must be gripped above at least 2/3 of the jaw height.		
Connection, stud	Ø 60	Ø 60	mm
Ambient temperature	+10 to +35	+10 to +35	°C
Weight per specimen grip, approx.	70	70	kg
Scope of delivery	2	2	pieces

CTA: 39716 39707



Hydraulic grips Type 8803, F_{max} 250 kN, overview



Hydraulic grips Type 8802, F_{max} 100 kN, overview

Accessories required

Hydraulic power pack

Product Information

Hydraulic grips Type 8802, Fmax 100 kN, and Type 8803, Fmax 250 kN

Flat jaws

Scope of delivery: 2 pieces each

Applications	Version	Specimen thickness [mm]	Gripping area [mm]	Hardness	Item No.
Flat jaws for metal strip and shoulder-end specimens, reinforced plastics (flat specimens)	Steel, concentric Grooves, distance 1mm	0 to 59 ¹⁾	Ø 74 ²⁾	58 HRC	314046
Flat jaws for metal strip and shoulder-end specimens, reinforced plastics (flat specimens)	Steel, pr ³⁾ 0.35 mm	0 to 59 ¹⁾	Ø 74 ²⁾	58 HRC	316139
Flat jaws for metal strip and shoulder-end specimens, reinforced plastics (flat specimens)	Steel, pr ³⁾ 0.75 mm	0 to 59 ¹⁾	Ø 74 ²⁾	58 HRC	320618
Flat jaws for metal strip and shoulder-end specimens, reinforced plastics (flat specimens)	Steel, pr ³⁾ 1.5 mm	0 to 59 ¹⁾	Ø 74 ²⁾	58 HRC	320620
Flat jaws for metal strip and shoulder-end specimens, reinforced plastics (flat specimens)	Steel, concentric Grooves, distance 2 mm	0 to 59 ¹⁾	Ø 74 ²⁾	58 HRC	317244
Thin metal strips, CFRP/GFRP strip specimens	Steel, smooth, ground	0 to 59 ¹⁾	Ø 74 ²⁾	58 HRC	317246

1) When using specimen grips Type 8497, a specimen thickness of 0 to 35 mm is possible. For Type 8597 a specimen thickness of 0 to 29 mm is possible.

2) With shatter protection shield

3) Pr = pyramid grid

Flat jaws

Scope of delivery: 1 set (= 4 pieces)

Applications	Version	Specimen thickness [mm]	Gripping area (H x W) [mm]	Ambient temperature [°C]	Hardness	Item No.
Textile tapes (flat specimens)	Steel, smooth	0 to 20	110 x 110	+10 to +35	55 HRC	320350 ¹⁾
Textile tapes (flat specimens)	Steel, undulated	0 to 20	110 x 110	+10 to +35	55 HRC	320352 ¹⁾

1) Can only be used with single-actuator hydraulic grips 8802 and 8803

Product Information

Hydraulic grips Type 8802, Fmax 100 kN, and Type 8803, Fmax 250 kN

Prism jaws

Scope of delivery: 2 pieces each

Applications	Version	Specimen thickness [mm]	Gripping area (H x W) [mm]	Ambient temperature [°C]	Hardness	Item No.
Prism jaws for round specimens	Steel, V-slot, undulated, distance 1 mm	Ø 3 ... 15 ¹⁾	74 high	-70 to +250	58 HRC	314050 ²⁾
Prism jaws for round specimens	Steel, V-slot, undulated, distance 1 mm	Ø 10 ... 59 ³⁾	74 high	-70 to +250	58 HRC	314052 ²⁾

- 1) When using specimen grips Type 8802, a specimen diameter of 3 to 15 mm is possible. For Type 8594 a specimen diameter of 6 to 15 mm is possible.
- 2) Suitable jaw mountings for the prism jaws (required for prism jaws): Item No. 314048
- 3) When using specimen grips Type 8802, a specimen diameter of 10 to 59 mm is possible. For Type 8594 a specimen diameter of 16 to 59 mm is possible.

Jaw mounting (required for prism jaws)

Description	Item number
Suitable jaw mounting for prism jaws	314048

Optional accessories

Description	Item number
Specimen gripper	325118
T-slotted shoe-connector with <ul style="list-style-type: none"> • M28 x 1.5 thread for connecting Ø8, 20, 36 mm mounting studs or load cells • centering spigot, Ø 30 H7, for connecting mounting unit, mounting flange or Ø 60 mm mounting stud Scope of delivery: 2 pieces	314054
T-slotted shoe connector for load cell calibration, Fmax 250 kN, with hole Ø 64/48 mm, Scope of delivery: 2 pieces	314056
Mounting stud, Ø 60 mm, Fmax 250 kN Scope of delivery: 1 piece	314062
Mounting unit for attaching compression test kits (Fmax 250 kN ¹⁾), rigid upper anvil holder (Fmax 250 kN ¹⁾), rocking upper anvil holder (Fmax 20 kN ¹⁾), Type A/B flexure table (20 kN ¹⁾) Scope of delivery: 1 piece	314058
Mounting flange for attaching flexure tables, Fmax 250 kN ¹⁾ , preferably for installation in lower grip Scope of delivery: 1 piece	314060

- 1) Fmax may be restricted due to a lower test kit/device Fmax