

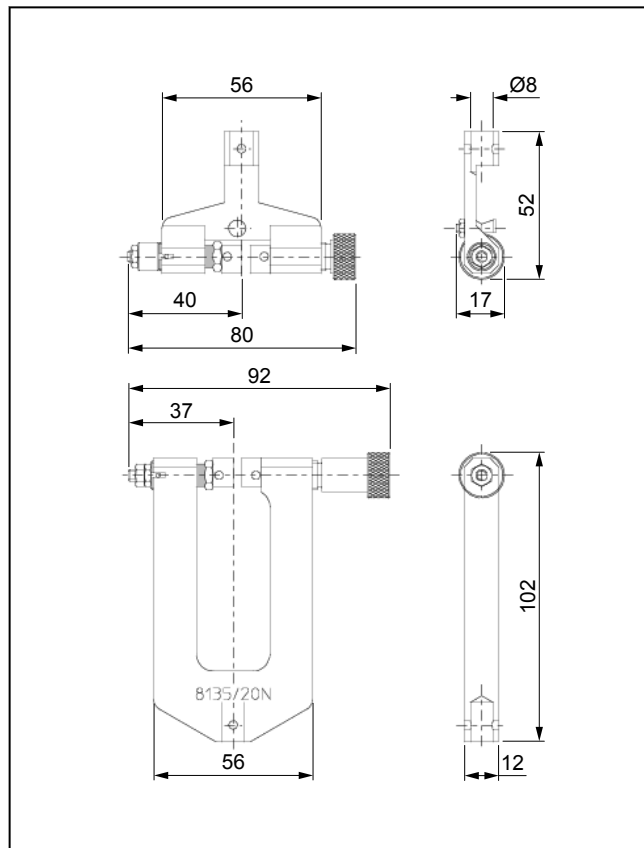
Product Information

Spring loaded grips Type 8135, Fmax 20 N

CTA: 290708 31238



Spring loaded grips Type 8135, Fmax 20 N



Spring loaded grip type 8135, Fmax 20 N, dimensions

Applications

- Specimen material:
Metal, plastics, textile, paper
- Specimen shape:
Round and flat specimens
- Type of loading:
Tensile

Function description

The spring loaded grip is a one-sided closing specimen grip. A screw is used to open and close the grips, as well as apply gripping force before the test.

The prestressed spring of the opposing jaw provides constant gripping force.

Advantages and features

- Precise test results with a high number of cycles that is achieved with the centering aid for inserting wires and threads.

- With the constant gripping force repeatable test results can be attained.
- Fast and easy insertion and gripping of the specimen due to the ergonomic and open design.
- The jaws are tiltable, which allows for their exact adjustment to the specimen.
- With the lightweight construction of the specimen grip, the measurement range of the load cell can be optimally utilized.
- If the application changes, the jaws can be changed quickly and easily without tools. The jaws are then automatically centered.

Product Information

Spring loaded grips Type 8135, F_{max} 20 N

Technical data

Item No.	313324	
Type	8135	
Test load F _{max}	0.02	kN
Dimensions		
Height		
Specimen grip, upper	52	mm
Specimen grip, lower	102	mm
Width Without clamping screw	56	mm
Depth		
Without clamping screw	12	mm
With clamping screw	17	mm
Adjustability of the opposing jaw	None	
Opening width with jaws	1	mm
Gripping of the specimen	The specimen must be gripped with the entire height of the jaw.	
Weight		
Specimen grip, upper	0.06	kg
Specimen grip, lower	0.08	kg
Specimen dimensions		
Flat specimen, thickness	0 ... 1	mm
Round specimen, Ø	0 ... 1	mm
Clamping surface		
Height	10	mm
Width	5	mm
Connection, stud	Ø 8	mm
Ambient temperature	-15 ... +80	°C
Scope of delivery	2	pieces

Accessories required

Flat jaws

Scope of delivery: 1 set (= 4 pieces)

Application	Version	Clamping surface		Ambient temperature [°C]	Hardness	Item No.
		Height [mm]	Width [mm]			
Fibers, hairs, soft fine wires, materials that are sensitive to clamping forces	Vulkollan, smooth	10	5	-15 ... +80	88 ± 3 Shore (A)	313326
Fine wires, fibers	Oxide ceramic, smooth	10	5	-15 ... +80	Knoop 2300 N/mm ²	313328

Product Information

Spring loaded grips Type 8135, Fmax 20 N

Application	Version	Clamping surface		Ambient temperature [°C]	Hardness	Item No.
		Height [mm]	Width [mm]			
Hard materials, fibers	Glass, smooth	10	5	-15 ... +80	Knoop 900 N/mm ²	313330
Fibers, soft materials	Polyamide, smooth	10	5	-15 ... +80	58 Shore D	313332