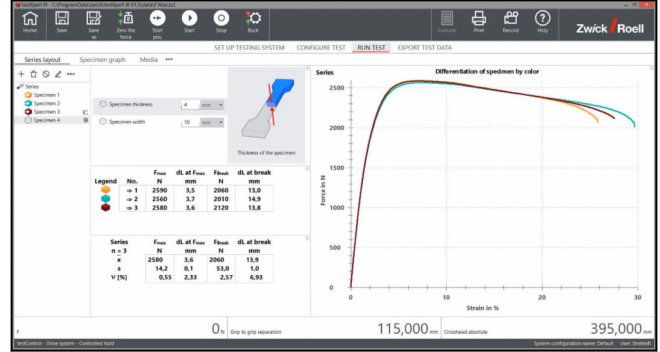
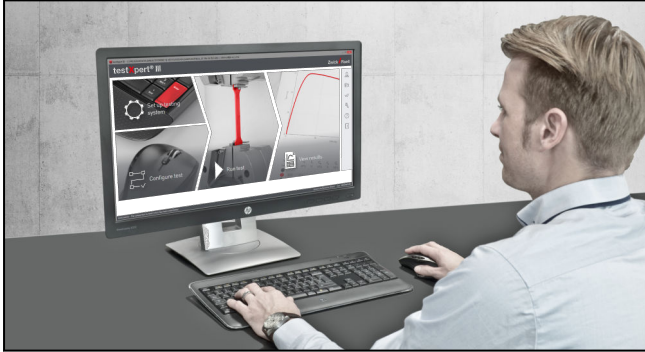


## Product Information

### testXpert III testing software

CTA: 129215 217767



#### Intuitive and workflow-based from the very start

testXpert III is the result of close cooperation with software users in the materials testing industry and the experience of over 40,000 successful testXpert installations. From the very start, testXpert III uses a workflow that is based on your lab processes to guide you step by step through your test. Get to know testXpert III and experience how easy it is to use.

testXpert III contains a wide range of functionalities to meet the requirements of different industries. Our experts are actively involved in various standards committees to ensure that current developments are incorporated into the testXpert III testing software.

With the basic program, which is included in the purchase of your testing machine or instrument, you receive a number of features that allow you to perform test tasks reliably and efficiently.

#### Range of testXpert III features included in the testing machine/instrument scope of delivery

- Selection of the appropriate language from a variety of language options
- Subsequent evaluation of specimens and series for calculation under changed specifications or the creation of new results
- System Configuration Builder—a unique software concept All relevant testing system and safety settings are saved according to the system configuration
- Result labeling included on graphs
- Export of results in CSV and ASCII format
- Tolerance monitoring
- Statistical evaluation of test results with display in results table and on graphs

- Specimen or series-specific report, can also be saved as PDF
- Channel Editor for the creation of additional physical measurement channels and formula channels
- Integrated media layout
- Connection of simple external devices
- Operator and specimen safety function

Also included in the basic program is a user management option with the following functions:

- Creation of users directly in testXpert III or via LDAP (Lightweight Directory Access Protocol) directly from Windows
- Definition of user groups with individual rights to specific testXpert III functions

This reliably eliminates input errors and prevents manipulation. Every user only sees the functions applicable to his or her job, which further simplifies the operation of testXpert III.

The user management feature already complies with the strict standards on highly regulated industries, such as medical and pharmaceutical.

Additionally included in the basic program for materials testing machines:

- Test programs  $F_{max}$  tensile and  $F_{max}$  compression
- Test program for manual tests with free target and/or speed preset
- Results: component height, maximum force, force at break, strain at break, strain at maximum force
- Force, stress, and strain control with adaptive control algorithm
- Correction for machine deformation (correction curve)
- Calibration of sensors

## Product Information

### testXpert III testing software

Additionally included in the basic program for testing instruments:

- Simple test program for determination of melt flow rate
- Simple impact test for determination of impact energy
- “HDT and Vicat test” test program for function check

#### testXpert® III Standard Test Programs

Depending on your test requirements, you have the option to select test standards from a portfolio of more than 600 pre-configured standard test programs.

A Standard Test Program is a testing solution designed for a specific standard and therefore ideal for the performance of **standard-based tests**, with guaranteed compliance. This means you can start testing right away.

#### testXpert® III Master Test Programs

A Master Test Program is based on the principle of a test sequence. To widen the scope of your test configuration options, we offer packages for test types including tensile tests, compression/flexure tests, tear growth/peel/adhesion tests and cyclic tests. In addition, every Master Test Program is pre-configured with six options and offers the possibility of adapting the interface terminology to your industry.

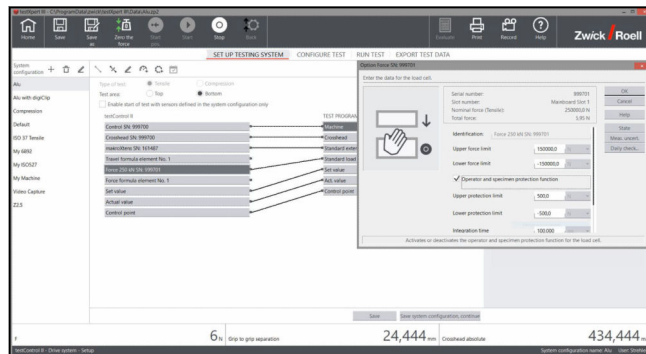
#### Operator protection

If the testing machine is driven outside of a test, the machine stops immediately when it detects the slightest amount of force. This allows the operator as well as the tools to have maximum protection.

#### testXpert® III options, overview table

Option	Item No.	Master Test Program	Master Industry Package	Standard Test Program	Standard Industry Package	Graphical Sequence Editor	All-in Suite
Results Editor	1035615	X	X	-	-	X	X
Layout Editor	1035617	X	X	-	-	X	X
Report Editor	1035620	X	X	-	-	X	X
Export Editor	1035618	X	X	-	-	X	X
Organization Editor	1035614	X	X	-	X	X	X
Virtual testing machine VTM	1035522	X	X	-	-	X	X

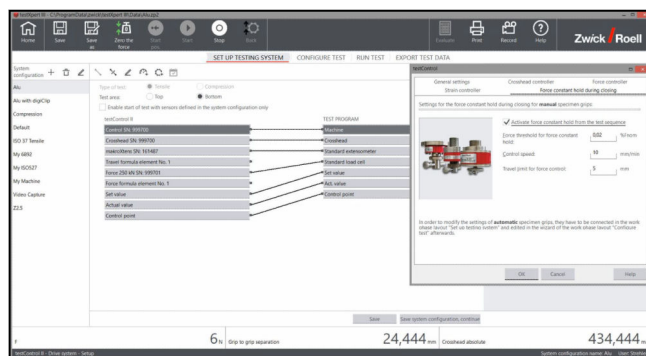
All data at ambient temperature.



Operator protection

#### Specimen protection

The testing machine automatically compensates for the smallest forces that can occur due to gripping the specimen. This eliminates the possibility of previous damage and ensures standard-compliant testing.



Specimen protection

CTA: 284292

CTA: 284290

Subject to change in the course of further development.

## Product Information

### testXpert III testing software

Option	Item No.	Master Test Program	Master Industry Package	Standard Test Program	Standard Industry Package	Graphical Sequence Editor	All-In Suite
Language swap	1035622	-	X	-	X	-	X
Upload/Download	1035957	-	-	-	-	-	X
Traceability	1035624	-	-	-	-	-	X
Extended control mode	1035959	-	-	-	-	-	X
Video Capturing Plus testControl II	1035575 + 1033655	-	-	-	-	-	.1)
Temperature control	1035623	-	-	-	-	X	X
HBM connection	1035532	-	-	-	-	-	-
National Instruments connection	1035524	-	-	-	-	-	-
Video Capturing multiCamera	1035574 +1033653	-	-	-	-	-	-
Measuring system related measuring uncertainty to CWA 15261-2	1053260	-	-	-	-	-	-

1) Video Capturing is included without the hardware synchronization.

- X = option included in product
- - = option can be ordered separately

Some options are already included in testXpert III products. The table below provides information on these. Options not included can be ordered additionally; all options can basically be combined with all testXpert III products.