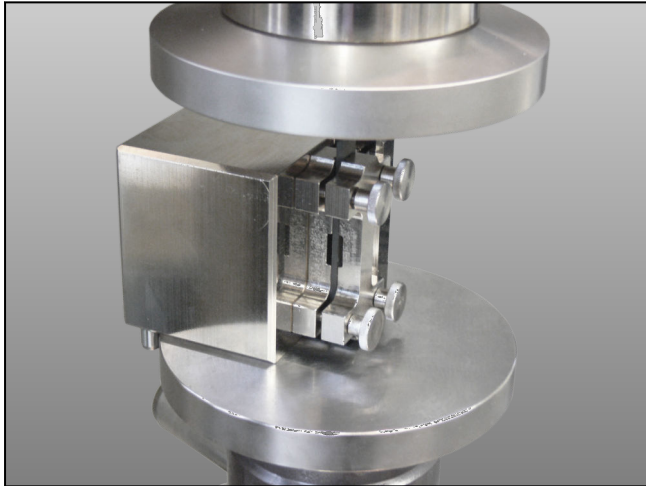


## Product Information

### Compression test kits (end-loading)

CTA: 44755 44754



Compression test kits (end-loading) between two compression platens

#### Applications

Tests

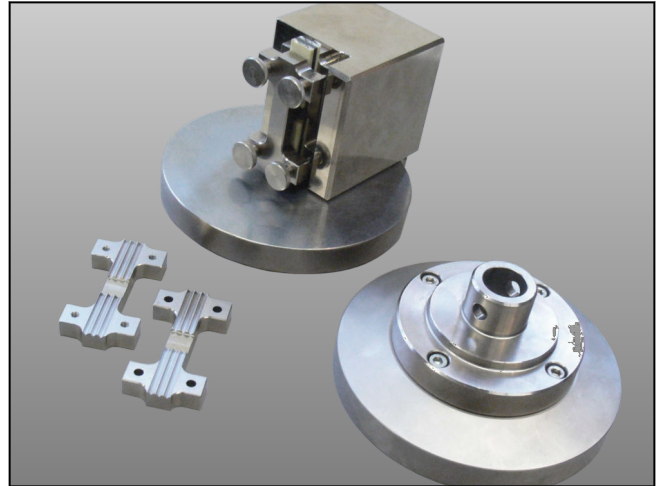
- based on ASTM D695, developed in various standards
- to ASTM D3846 on slotted single-lap specimen; measurement of in-plane shear

#### Function description

The compression test kit is used for testing fiber-composites.

The specimen is loaded longitudinally between two compression platens.

Two support plates with continuous longitudinal serrations are used when measuring compressive strength.



Compression test kits (end-loading), general view (typical)

They prevent premature material failure due to bending. Two support plates have the serrations relieved to accommodate the strain gauges for measurement of compression modulus. A mount with fixed stops ensures exact axial alignment of the specimen.

#### Advantages and features

- Tool-free specimen insertion
- Exact centering to compression axis of testing machine
- Compression platens can be replaced independently of the test fixture in the event of wear.

## Product Information

### Compression test kits (end-loading)

#### Technical data

Item No.	062635	062636	
Compression test kit (end loading) as per	prEN 2850 Type B, ISO 14126 Method 2, AITM1-0048	ASTM D695, Boeing BSS 7260, SACMA SRM 1R-94, DIN 65375, ASTM D3846	
Test load $F_{max}$	50	50	kN
Specimen dimensions:			
thickness	1 to 6	1 to 6	mm
length	75 to 80	79.4	mm
width	12.5	12.7 to 19	mm
Temperature range	-80 to +300	-80 to +300	°C
Weight, approx.	3.5	3.5	kg
Scope of delivery:			
2 support plates with continuous longitudinal serrations, length	70	73	mm
2 support plates with serrations relieved at center, length	70	73	mm
mount with fixed stops	1	1	piece

#### Accessories required

- Two compression platens (diameter 136 mm)