

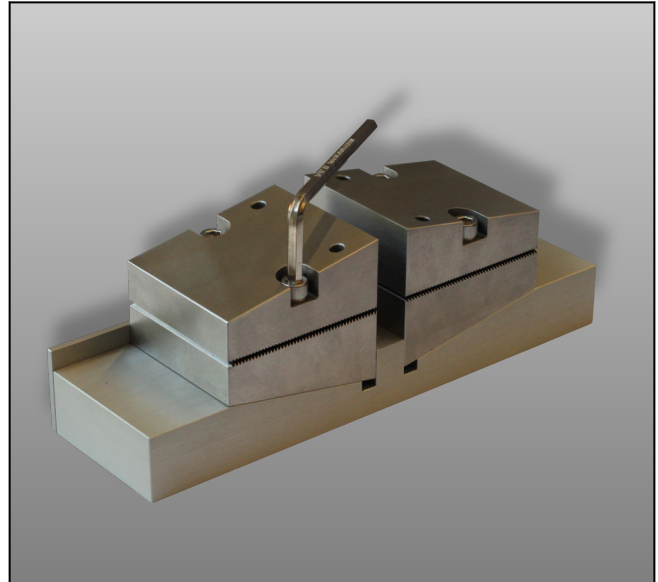
## Product Information

### Compression test kit (shear loading), IITRI version

CTA: 44796 44794



Compression test kit (shear loading), IITRI version



Setting gauge with centering spigot

#### Applications

Test to ASTM D3410

#### Function description

The compression test kit is used for testing fiber-reinforced composites and is based on the wedge clamp principle.

The kit consists of the following components: upper holder, specimen grip bodies, 3 sets of wedge jaws, setting-gage with centering-spigot.

A centering aid allows specimen and wedge jaws to be aligned exactly with each other. The clamped specimen

plus wedge-jaws are inserted into the lower grip body. The upper grip body is inserted into the upper holder. The parts of the device are moved together and engage with each other. Centering bolts ensure alignment of the upper grip to the lower grip.

#### Advantages and features

- Centering aid for aligning specimen
- For compression forces up to 220 kN
- Large temperature range: -70 to 300°C
- No machining of specimen end face required

## Product Information

### Compression test kit (shear loading), IITRI version

#### Technical data

Item No.	062157	
Test load, max. (Fmax)	220	kN
Weight	43	kg
Ambient temperature	-70 to +300	°C
Upper connection	connector for mounting stud (Ø 60 mm) included	
Lower connection	resting on compression platen	
Included in delivery	upper connecting bracket, specimen grip bodies, 3 sets of wedge jaws, setting-gage with centering-spigot	
Specimen dimensions:		
thickness	4.3 to 8.9; 7.4 to 11.9; 10.7 to 15.2	mm
length, max.	140	mm
width	38	mm
Jaw separation	0 to 50	mm

#### Accessories required

- 1 compression platen (min. diameter 136 mm)